

IT ALL  
STARTS  
HERE...

THANK YOU...

LIFE CHANGING  
World Shaping



UNIVERSITY OF  
LIVERPOOL

DONOR REPORT  
2014

# WELCOME

A gift to the University of Liverpool will have an impact long into the future. Whether you have chosen to support talented individuals, touch the lives of millions through our groundbreaking research, or enhance the lives of our students through the Benefactors' Fund, your donation will be an investment that will influence generations to come.

We have had an outstanding year for fundraising at the University, with your gifts supporting a number of initiatives that would not otherwise have been possible. In particular, I would like to mention the donors who left a bequest to the University in their will this year; we received a record number of legacy donations which really have had a transformational impact.

I am personally very proud of the University's expanding international graduate body and I am delighted that our US foundation, University of Liverpool in America Inc, has had its most successful fundraising year to date. We are in the process of setting up a similar entity in Hong Kong which will be fully established by the summer. Over the next three years many of our supporters in Hong Kong will have their donations matched, thanks to a fund endowed by the Tung Foundation, which will double the value of the initial gift. So there really is no better time to become a supporter.

Through your donations to the Benefactors' Fund, we have been able to invest in our teaching and learning resources, enabling us to maintain our reputation for offering an excellent student experience, and we have also helped a number of gifted students to pursue research which is addressing some of the biggest global challenges.

I hope that you enjoy reading about the many ways in which your contribution has helped to change lives and shape the future of our University. Thank you for your continued commitment.



**Professor Sir Howard Newby CBE**  
Vice-Chancellor



**We have had an outstanding year for fundraising at the University, with your donations supporting a number of initiatives that would not otherwise have been possible.**

**Professor Sir Howard Newby CBE**  
Vice-Chancellor

# CELEBRATING ANOTHER FANTASTIC YEAR

GIFTS WE RECEIVED BETWEEN 1 AUGUST 2012 AND 31 JULY 2013

Total donations

## £3,327,597

Trusts & foundations £459,958  
Non alumni £556,953  
Corporate support £40,509  
Alumni £2,270,177



NUMBER OF DONORS BY DECADE GRADUATED



## \$134,879

Raised by University of Liverpool in America Inc

## HKD 53,000

Raised through the Hong Kong Fund

## £2,343,733

Received from legacies

## 1,746

Donors from 28 countries

Since the end of our financial year, we have received an additional

## £1,059,246

# INCREASED DONATIONS, IMPROVED FACILITIES

## HOW YOUR GIFTS HAVE BEEN INVESTED

Our annual giving programme, the Benefactors' Fund, was established to create a sustainable fund to enrich the student experience at Liverpool. The success of this programme, which now has more than 1,700 donors, demonstrates the impact that collective donations of all sizes can have.

Thank you to everyone who has contributed to the Benefactors' Fund this year. With your support we have raised **£206,586** which has helped us to invest in state-of-the-art equipment, research scholarships and world-class facilities. Here are some of the projects that we have supported this year.

**SCHOLARSHIPS**  
**£62,484**

**VIRTUAL ENGINE  
TEST BENCH**  
**£30,000**

**INNOVATIVE  
STUDY ZONE**  
**£30,000**

**ONLINE  
LEARNING  
PLATFORM**  
**£11,587**

**PORTABLE  
ULTRASOUND**  
**£26,000**

**GIANT  
DISPLAY  
GLOBE**  
**£11,240**



### GIANT DISPLAY GLOBE

A giant, three-dimensional globe showing the geographic characteristics of the Earth has been purchased for our award-winning £23 million Central Teaching Laboratories.

The 40" globe is located in the atrium of the Environmental Sciences floor and will be used by undergraduates and lecturers as well as hundreds of school pupils and teachers visiting the University as part of their outreach work.



It is well known that many students have trouble thinking in 3D, and this problem is exacerbated by the usual viewing of maps as flat projections. The globe is therefore invaluable in warding off the plague of 2D thinking. More generally, having such a large and three-dimensional model of our Earth on constant view will provide some context for our studies of the environment, and serve as a reminder of why we chose to study the Earth in the first place.

Dr Isabelle Ryder  
Department of Earth,  
Ocean and Ecological Sciences

### INNOVATIVE STUDY ZONE

A new study area has been introduced in the Sydney Jones Library which is designed to provide a collaborative working space for students undertaking group work.

Boasting state-of-the-art technology, including interactive projectors that communicate with laptops and other mobile devices, the innovative facility makes it easier for students to work in groups – an increasingly important element of undergraduate teaching and learning.



Working in groups and giving effective presentations are now important aspects of student learning. Our grant from the Benefactors' Fund is allowing us to achieve a dramatic improvement in the way the Library supports these activities. It's exciting for us to be able to provide our students with facilities that are in advance of anything that their peers at other universities will have access to.

Phil Sykes  
University Librarian





Having a Virtual Bench at the University of Liverpool will take the experience of hundreds of undergraduate students to a rare level of originality. There are only a handful of Virtual Benches worldwide and it is far beyond the ordinary laboratory teaching equipment one expects to find in even the most prestigious of universities. The bench greatly enhances the uniqueness of the student experience in Engineering at Liverpool.

Dr David Dennis  
Centre for Engineering Dynamics

### STATE-OF-THE-ART ENGINEERING FACILITIES

Students will experience what it is like to be a real-life test engineer, thanks to the purchase of a Virtual Engine Test Bench in the School of Engineering.

The unique facility, which is only the second of its kind in the UK, simulates the equipment that test engineers use in industry, offering students a more visual and interactive learning experience and helping them to understand the behaviour of a turbofan engine.

It will be used extensively to enhance teaching across a wide range of modules as part of the Aerospace Engineering, Mechanical Engineering, and Engineering undergraduate programmes, benefiting around 675 undergraduate students each year, and will also be used as a key selling point for student recruitment.



### ANATOMY ULTRASOUND

Medical students are taking advantage of a new ultrasound machine which can produce real-time two and three-dimensional images of the human body, as well as visualisation of blood vessels and blood flow.

The equipment will enhance small to medium group teaching of anatomy to undergraduate students from a wide variety of programmes including Medicine, Dentistry, and Anatomy.

It is hoped that having access to this equipment will help to improve students' competence and enable them to become confident at an early stage with an imaging modality which is increasingly common in clinical practice.



Using the ultrasound equipment has been the highlight of both my first and second year anatomy lessons – being able to see the volunteer's heart beating and the outline of his atria and ventricles on the screen was fascinating; the equipment provides a new method of learning and greater depth to the subjects we are studying. I can't wait to use it again!

Rebecca McKnight  
Second year Medical student



# ATTRACTING THE BRIGHTEST STUDENTS

**We pride ourselves on being a leader in the Russell Group in terms of Widening Access, providing educational opportunities to those students who are most able but least likely to come to university.**

This is a key area of focus for our fundraising activity, enabling us to maintain our high academic standards and reputation by attracting the brightest students to Liverpool.

Philanthropic support to this area of activity enables us to grow and broaden our access programmes, helping to ensure that finance is not a barrier for any of our students, and supporting them throughout their student experience.

Access and excellence scholarships, travel bursaries, subsidised internships and exchange programmes funded through philanthropy have a dramatic impact on the future prospects of our graduates. Michael Mohebbi from our Educational Opportunities team explains:

“Students from underrepresented backgrounds often face financial challenges, especially those who are the first in their family to go to university. Trying to hold down part-time work alongside full-time study can be tough and detract from the student experience. Support to this area makes such a difference, enabling our undergraduates to enjoy a richer student life, worry less about money, and focus on immersing themselves in the university experience.”

“ ”

**Knowing I had additional support helped me to focus on my studies even through difficult times. I felt privileged to be given such an opportunity and I wanted to make the most of it.**

**Abbie Harrison**  
Year 1 Physiology student



# SUPPORTING LEADERS OF THE FUTURE

**Change is effected through great leadership, and our aim is to educate globally minded, socially responsible leaders who will make a significant impact on our world.**

Our global network of graduates hold leadership roles in business, politics, education and the third sector, and the University is striving to nurture the next generation of leaders and thinkers to follow in their footsteps. We offer a number of scholarships to support gifted students to pursue postgraduate study which have been funded thanks to the generosity of our alumni community and supporters.

## PAUL ROY MBA SCHOLARSHIP

The inaugural Paul Roy MBA Scholarship has been awarded to Julie Allen (BSc Psychology 2013).

The scholarship, which covers full tuition fees, was established by alumnus Dr Paul Roy (BA Hons Economics 1968, Hon LLD 2009) to support promising MBA students wishing to pursue a future career in finance or enterprise.

Julie, who lives in Warrington, came to university after having children and working for a number of years in sales. She decided that to progress her career she needed a degree and took the brave step of leaving her job to enrol on a college course before beginning her undergraduate degree at Liverpool.

“It’s not just the money; it’s a pat on the back and an acknowledgment of all of the hard work and long nights studying,” said Julie. “The scholarship is priceless, but for me the recognition is worth more than the money, because it says that people believe in me.”

## ULMS 10TH ANNIVERSARY MBA SCHOLARSHIP

This has been a particularly exciting year for the University of Liverpool Management School (ULMS). As well as celebrating its 10th anniversary, the School has achieved AACSB accreditation, placing it within the top 5% of business schools worldwide. To commemorate these significant achievements, the School launched a fundraising appeal to encourage alumni to provide support for gifted students undertaking an MBA.

Current scholarship recipient Kiruba Shankar said: “I am both humbled and proud to be the first recipient of the ULMS 10th Anniversary Scholarship. Knowing that graduates of the School have gone on to benefit organisations, communities and societies worldwide instils me with great pride and determination to fulfil the expectations of being a Management School scholar.”

“After graduation I would like to return to India and work to improve supply chain management in local agriculture. In this way the impact of the scholarship will be felt by me and my family, and I will strive to utilise what I have learnt to create a positive impact on our community.”

## THE SIR JOSEPH ROTBLAT ALUMNI SCHOLARSHIP

The Sir Joseph Rotblat Alumni Scholarship supports alumni returning as postgraduate research students, and recognises both academic merit and financial need.

The scholarship, which was named after former University lecturer and Nobel Peace Prize winner Professor Sir Joseph Rotblat (PhD 1950, Hon DSc 1989), is available to all graduates of the University wishing to undertake a PhD.

This year's recipients are Grace McGuire (BSc Hons Psychology 2012, MSc Investigative and Forensic Psychology 2013) and Daniel Brown (MA Archaeology 2012).

Grace's PhD is researching the effectiveness of intervention programmes which are designed to prevent those who have committed domestic or sexual abuse from reoffending, while Daniel's PhD in Archaeology is helping to decipher forms of non-verbal communication embedded within Etruscan clothing in tomb wall paintings.



**Without the alumni community my involvement in this project would not be possible.**

Grace McGuire  
Sir Joseph Rotblat Alumni Scholar

It was an unbelievable surprise to learn that I had been selected for this scholarship. It's always been my ambition to become an academic researcher and I've worked really hard to get the best results so that I would be in a position to fulfil that goal, but I knew money could be an obstacle as I didn't have the financial resources to fund postgraduate study.

However thanks to the support of this scholarship I've had the opportunity to undertake a PhD in Archaeology studying aspects of identity and cultural expression within Etruscan clothing and adornment as depicted in the tomb wall paintings at Tarquinia in the Monterozzi necropolis. My research focuses on deciphering the forms of non-verbal communication embedded within the clothing; not only will this serve to elucidate our understanding of this ancient and often maligned culture, but it will also impart a greater understanding of identity formation and expression which could be applied to contemporary contexts. This is vital so that we can establish how identities are formed, how they are expressed, and how they are sustained, because identities continue to be the source of much strife and conflict.

It is invigorating that my commitment and ability has been recognised and that among so many talented and deserving applicants I have been selected for this scholarship. Without this support I would not have been able to achieve my goal and I cannot overemphasise my gratitude to be a recipient.

Daniel Brown  
(MA Archaeology 2012)



## ADRIAN RINGROSE SCHOLARSHIP



The first Ringrose scholarship has been awarded to alumna Maïke Pötschulat (MSc Urban Regeneration and Management 2013).

The scholarship was established thanks to a gift from alumnus Adrian Ringrose (BA Hons Political Theory and Institutions 1988), Chief Executive Officer of Interserve, one of the world's largest service, maintenance and building groups. It supports postgraduate students whose work falls under one of the University's seven research themes, Changing Cultures, which explores the cultural impact of urban regeneration, migration and mobility, digital media, and cultural understanding of health issues.

Maïke will be researching the phenomenon of Studentification, which occurs when a growing, often international, student population 'take-over' traditionally non-student neighbourhoods, altering the social and cultural balance and, over time, influencing the area's infrastructure. She will focus her research on student interactions with an area's cultural and social life and the perceptions of local residents living in close proximity to student halls or house shares both in Liverpool and Maïke's home city of Berlin.



**I couldn't believe it when I heard I'd got the scholarship! I actually thought it was a mistake. I'd been applying for jobs when I found out, but I'm so glad I can continue in academia. I love Liverpool – it's such a vibrant city and it reminds me of Berlin, so it's always felt like home.**

Maïke Pötschulat  
2013 Adrian Ringrose Scholar

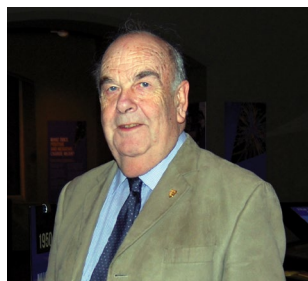
## PARTICLE PHYSICS ALUMNI STUDENTSHIP

Alumnus Dr Clive McLintock (BSc 1959, BSc Hons Metallurgy 1960, PhD 1963) has made a donation to the University to launch an Alumni Fund for a PhD Studentship in Particle Physics.

The recipient of the studentship will have the opportunity to work at the forefront of international science, exploring the further development of the Large Hadron Collider which played a crucial role in the discovery of the Higgs boson particle in 2012. They will also be given the opportunity to spend time at the CERN laboratories in Geneva.

Dr McLintock's gift will establish a pound-for-pound matching fund to encourage other alumni to support the initiative and help fund additional future scholarships, and to ensure that the University retains its groundbreaking position in global science. The first studentship will be recruited to start in October 2014.

To find out more, or to make a donation to the fund, please visit [www.liverpool.ac.uk/giving/particle-physics](http://www.liverpool.ac.uk/giving/particle-physics)



Dr Clive McLintock



## DUNCAN NORMAN SCHOLARSHIP

This year marks the 10th anniversary of the highly prestigious Duncan Norman scholarships scheme which was established in 2004 by a donation of £1 million from The Duncan Norman Charitable Trust.

The scholarship enables academically gifted students who are considered to have the personal qualities to make them leaders in society to pursue MPhil/PhD study at the University. It was set up in memory of the late Duncan Norman, whose descendants are now among the Trustees.

During his lifetime, Duncan was Chairman of the Liverpool-based Owen Owen and TJ Hughes department stores and had a great affinity with the University, including serving terms as President of Council and Senior Pro-Chancellor. He was awarded an Honorary Doctorate

of Laws by the University in 1964 and his portrait now hangs prominently in the University's Foundation Building.

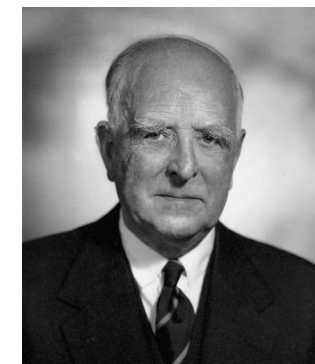
Richard Asser, Chair of the Trustees, said: "We are delighted by the success of the programme over the past 10 years and continue to be impressed by the quality of students and their research. I am particularly pleased to see how the scholarship has benefited past recipients and the success they have gone on to achieve. The Trustees look forward to continuing their partnership with the University into the future."

This year's recipient of the Duncan Norman Scholarship is William Green, a graduate of Christ Church, Oxford. His thesis will explore Richard Wagner's music and its continued cultural impact.



**My tutor at Oxford had encouraged me to apply to other institutions to study for a masters degree, before possibly returning to Oxford to do a PhD. When I heard about the studentship in Musical Analysis that was being offered by the University of Liverpool and discovered that the research interests of my potential supervisors neatly coincided with my own, it seemed like the perfect choice.**

William Green  
2013 Duncan Norman Scholar



Duncan Norman

# A GLOBAL NETWORK OF INVALUABLE SUPPORT

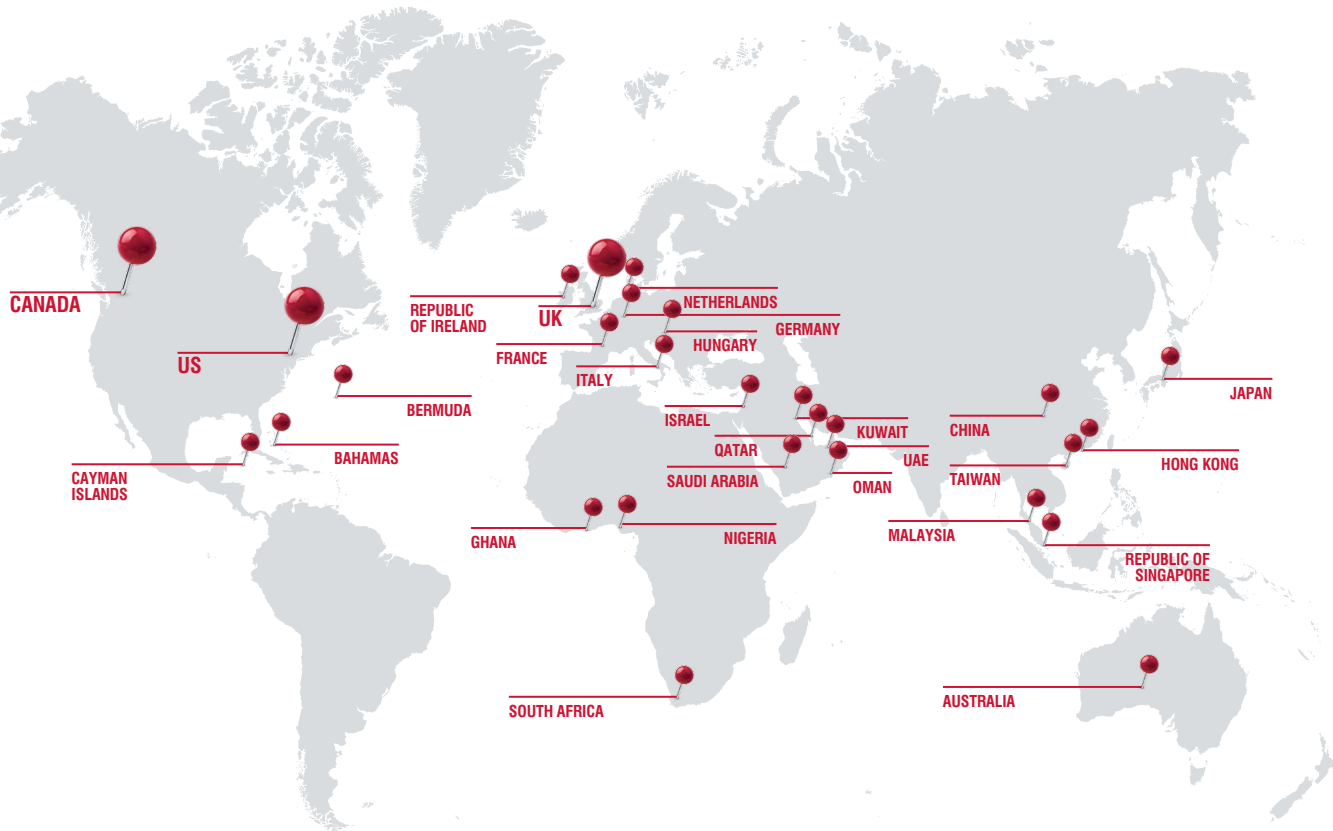
As the University's networks expand and develop across the world, the role that our global community play in terms of philanthropic support is invaluable. Donations from alumni living outside the UK represent 10% of our total funds raised and make a significant contribution to the continuing success of the University.

The University's independent charitable organisation, University of Liverpool in America Inc, continues to grow, and plans are progressing to establish an independent charitable foundation in Hong Kong this summer.

Through these international foundations, alumni are able to retain and strengthen their connection with Liverpool, while offering their support in a tax-efficient way.

The University also has prescribed foreign educational institution status with the Canada Revenue Agency. This means that donors in Canada who support the University can claim a non-refundable tax credit on their income tax return. As a qualified recipient, the University is also eligible to receive gifts from Canadian registered charities.

## WHERE OUR DONORS LIVE



**53,000** HKD HKD HKD

Our Hong Kong donors have given a total of HKD 53,000

**£1,111**

A signed Liverpool FC shirt donated by James Lo (BEng Hons Civil Engineering 1980) from the University of Liverpool Graduate Association (Hong Kong) was auctioned and raised £1,111 to support Hong Kong Graduate Association scholarships

**\$134,879**

Raised by University of Liverpool in America Inc

**\$11,510**

We have raised \$11,510 on the strength of two telephone campaigns to the US and Canada



**SUPPORTING NEW DEGREES**

This year University of Liverpool in America Inc received a generous donation of \$50,000 from PepsiCo on approval of the Board of Directors, the gift will be directed to support a specialist 'Big Data Business Management' masters degree at our Management School.

The 'Big Data' industry is valued at more than \$100 billion and is growing at more than 10 percent per year – greater than the rest of the software industry combined. The programme aims to give students the skills needed to become consultants, managers and executives who rethink data and make sense of and communicate 'Big Data' in ways which provide useful business insights to organisations. It will also link with research interests in other Schools within the University, including Computer Science, Mathematics and Engineering.



PepsiCo's contribution was facilitated through the support of alumnus Dr Mehmood Khan MD (MBChB 1981), PepsiCo's Executive Vice-President, and Chief Scientific Officer, Global Research and Development. In recent years Dr Khan has returned to Liverpool to visit his alma mater, meeting with scientists, academics and students and delivering a talk at the Management School.

**TUNG LIVERPOOL SCHOLARSHIP**

The Hong Kong-based Tung Foundation has launched a 'Tung Liverpool Scholarship' for Hong Kong and Chinese students studying at the University of Liverpool.

Founded by the late CY Tung – father of Liverpool graduates, CH Tung and CC Tung – the Foundation supports social, cultural and educational causes.

The donation is supporting three areas: an enhanced award for selected students from the Hong Kong Graduate Association Scholarship programme; a dedicated postgraduate research award; and a matching donation fund.

The scholarship will provide an enhanced award to undergraduate or masters students studying on non-clinical taught programmes at Liverpool who have already been successful in their application to the Hong Kong Graduate Association Scholarship. It will also offer PhD candidates from Hong Kong and mainland China the opportunity to undertake research at the University.

The Tung Foundation has also designated part of its donation towards a matched funding programme for donors in Hong Kong to encourage and maximise gifts to the University. This will be available for the next three years and will assist the University's fundraising activities in Hong Kong, as well as initiatives such as student exchanges and research.

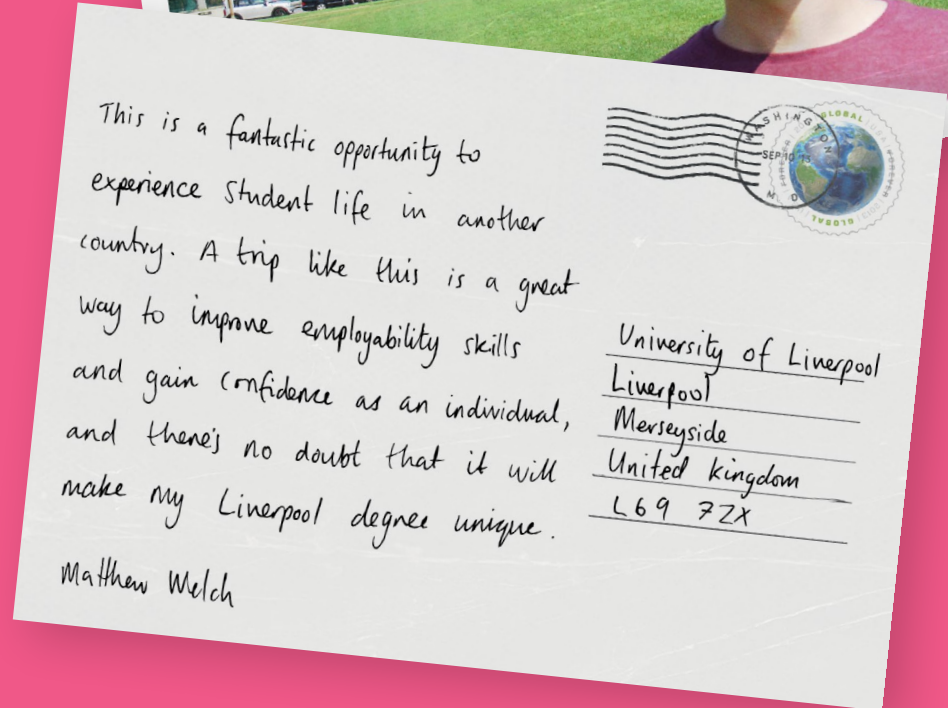
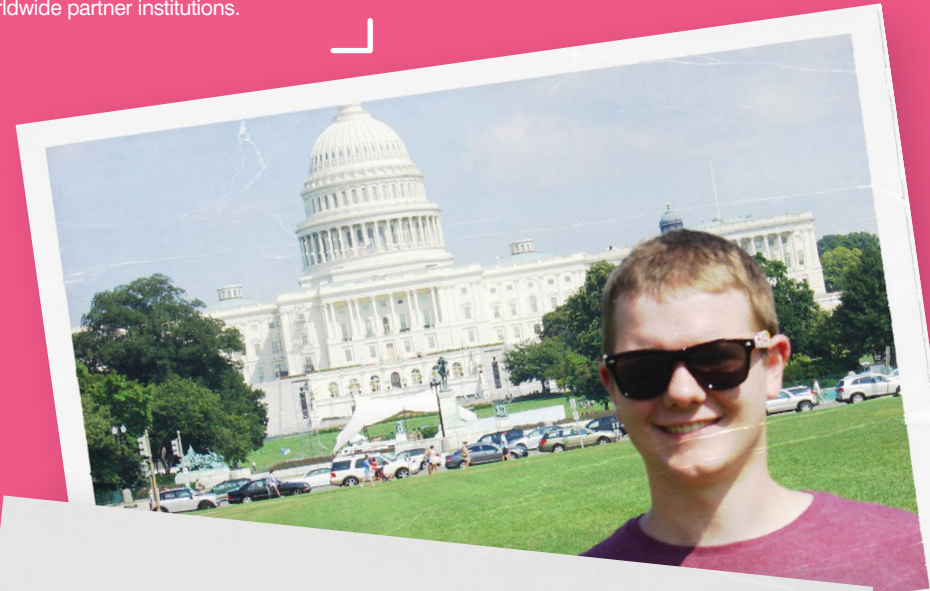
**FUNDING EXCHANGES AND SCHOLARSHIPS**

Since its launch in 2010, University of Liverpool in America Inc has continued to grow, with 2013 proving to be a record year for donations from US-based alumni and supporters.

Gifts to University of Liverpool in America Inc have already provided grants to the University to fund exchange and scholarship opportunities. Several students from across all three University Faculties have been able to spend time studying at US institutions, which has provided social and academic benefits for those involved and helped to make their Liverpool degree unique. We now want to grow this programme to support PhD studentships for the brightest research students, and to give undergraduate students who would otherwise not be able to come to the University the opportunity to study for a Liverpool degree.

Plans are also in place to develop a US internship programme, which will offer Liverpool students opportunities to spend time working with American businesses. The programme will help participants to acquire and develop practical knowledge and skills in the workplace, improve their future employability, and provide a real competitive advantage when they graduate. The programme is also intended to strengthen alumni connections and networks in the US by involving US-based alumni in the placement of students in their company.

History student Matthew Welch is one of this year's recipients of the University of Liverpool in America Inc Scholarship. He is spending this semester at the University of Maryland, one of our worldwide partner institutions.



# SUPPORTING GROUNDBREAKING RESEARCH



## IMPROVING CANCER RESEARCH CAPABILITY

Head and neck cancer patients in Liverpool may soon benefit from new treatments, thanks to a £130,000 state-of-the-art laboratory at Aintree University Hospital.

Jointly funded by Aintree University Hospital and the University, together with a donation of £60,000 from the Johnson Foundation, the lab will allow researchers who are currently based five miles away at the University to collect and prepare samples on site, which is essential for many research projects.

The Johnson Foundation provides financial support to local education, sport, health and youth projects on Merseyside. Peter Johnson, Chairman of the Foundation, chose to contribute to the lab after a friend received treatment for cancer at Aintree University Hospital.



Making a gift to the University of Liverpool's Head and Neck Cancer Team at Aintree allows me to show my appreciation for the way they have looked after a good friend of mine. It is heartening to know the difference this gift will make for head and neck cancer research at Liverpool, as they strive to treat more patients and continue to be at the forefront of this cancer speciality.

Peter Johnson  
Chairman of the Johnson Foundation

**£60,000**  
TO IMPROVE CANCER  
TREATMENTS

## RESEARCH INTO CHILDHOOD BOWEL DISEASE

The University has received a grant of £25,000 from the Crohn's & Colitis in Childhood (3Cs) charity to fund a research post in the Wolfson Centre for Personalised Medicines.

Grant recipient Dr Anastasia Konidari will be researching paediatric inflammatory bowel disease, a lifelong, incurable disease which has a severe impact on children's lives and the lives of their families, requiring multiple clinic visits, hospital admissions, surgery, and cancer screening.

Anastasia will study the efficacy of certain medications, specifically a new drug transporter called ABCB5, to establish how genetic differences between children can influence their response to the drug.

The Centre for Personalised Medicines, which is housed in the refurbished Old Royal Infirmary on the north side of the University campus, was opened in 2007 following a successful fundraising appeal which raised a total of £2.5 million.

## FUNDRAISING FOR NEW CHILD HEALTH INSTITUTE

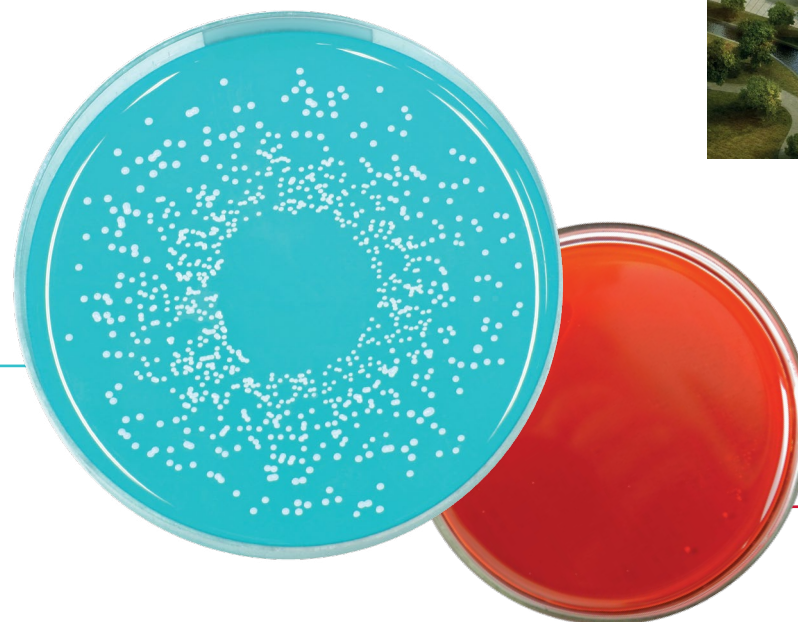
The University is raising £10 million to help build an Institute for Child Health as part of Alder Hey Children's Hospital's new state-of-the-art campus, Alder Hey in the Park, which will offer leading care and treatment facilities for children.

The Institute, part of one of Europe's leading hospitals, will enable us to further build on our existing excellent research track record in this field, providing the expertise, talent, equipment and facilities to push forward breakthroughs in treating childhood infectious diseases, cancer, asthma, cystic fibrosis and lupus.

The facility will also give us the research capacity to work with a greater number and variety of children's healthcare and research organisations throughout the UK and overseas.



**£25,000**  
TO FUND RESEARCH  
INTO BOWEL DISEASE



# LEGACY GIFTS LEAVE A LASTING IMPRESSION

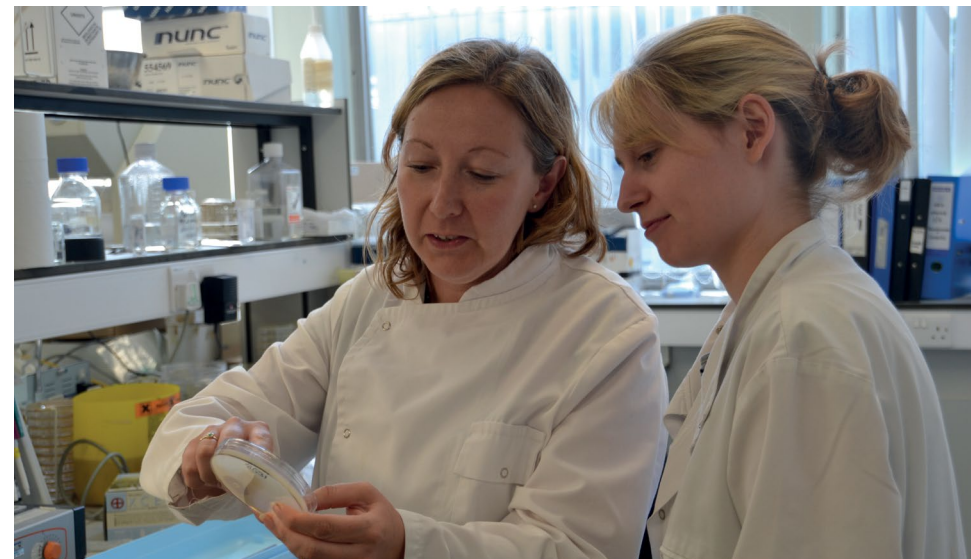
The University has benefited from a record number of legacy bequests from alumni and other supporters over the past year, with more than £2 million received in total. These donations, ranging in size from £1,000 to £1 million, have been directed to support projects across all three of our Faculties and demonstrate the wide variety of areas across the institution that donors choose to support.

We receive around a quarter of our philanthropic donations from legacy gifts. This support is vital so that we can continue to improve the quality of the student experience we offer at Liverpool, to provide scholarships and bursaries, and to fund vital research which has an impact on a global scale.

Recent legacy gifts have funded a lecture series in the Department of English, the refurbishment of the Sydney Jones Library, two veterinary PhD studentships in the Institute of Infection and Global Health, and student research support in the Department of Electrical Engineering and Electronics.

**A legacy bequest of any size is an investment in the education of thousands of students and the future of the institution. It could also significantly reduce inheritance tax liability.**

If you are interested in discussing a legacy gift, or would like help with suggested wording for inclusion in your will, please contact Stephen Kehoe on +44 (0)151 795 4637 or email: [stephen.kehoe@liverpool.ac.uk](mailto:stephen.kehoe@liverpool.ac.uk)



Dr Nicola Williams from the Department of Epidemiology and Population Health pictured with PhD student Emma Ormandy

## TOTAL MONEY RECEIVED FROM LEGACIES IN THE PAST YEAR

# £2,343,733

## MARJORIE FORREST PHD STUDENTSHIPS



**The Marjorie Forrest Bequest has provided me with the freedom to begin my PhD and helped me to invest in my future research career. Without the bequest, further full-time study would simply not have been viable.**

**Emma Ormandy**  
Marjorie Forrest PhD Studentship Recipient

University supporter Marjorie Forrest left a legacy to the School of Veterinary Science to contribute towards Veterinary research. Her gift has helped to fund two PhD students – Emma Ormandy, from the Institute of Infection and Global Health, who is investigating the transmission of antibiotic resistance between people and dogs; and Katie Lee from the Institute of Ageing and Chronic Disease who is looking at tendon and ligament injuries in horses, dogs and humans. Katie's work aims to understand where ligament stem cells are located and what sort of environmental components will allow stem cells to heal tendon and ligament injuries.



Leaving a legacy allows me to show my appreciation for the way that the University has honoured both me and my late husband and it's very rewarding to know that this gift will truly benefit all concerned.

Pat Dyson

### PAT DYSON LEGACY GIFT

Pat Dyson, a long-standing supporter of the University, has chosen to leave a gift to the University in her will.

Pat has had a long association with the University and has supported us in a variety of ways for many years. Her husband Arnold, a former Mr Universe, used to run a gym on the campus in Oxford Road where he trained students, staff and the general public in weight lifting and actively promoted health and wellbeing.

Arnold featured in the University's Hall of Fame which was created at the Sport and Fitness Centre to celebrate the careers of some of our most successful sporting alumni and sporting figures associated with the University. Tragically he died in the summer of 2009, however Pat continued

her relationship with the University and decided she would like to set up a sports scholarship in his memory. This scholarship is now awarded annually at the Athletic Union Dinner.

Over the years Pat has supported a number of student sports clubs and purchased various pieces of equipment in her husband's memory, however her personal passion is animals and animal welfare, and she has also donated a number of gifts to the Small Animal Teaching Hospital, contributing much-needed funds for surgical equipment and kit.

In 2010, Pat confirmed she wanted to leave a legacy to the University of Liverpool and we are delighted she has felt inspired by the work of the University to make this commitment.

## LEGACY BEQUEST INFORMATION FORM

Please consider the University when you are preparing your will. Legacy gifts benefit the University long into the future and are a great way to leave your mark on the institution.

Alternatively complete and return this tear-off form and a member of the team will contact you to discuss the process in more detail.

Leaving a legacy is easy to arrange and could even reduce the amount of tax payable on your estate. For more information contact Stephen Kehoe on +44 (0)151 795 4637 or email [stephen.kehoe@liverpool.ac.uk](mailto:stephen.kehoe@liverpool.ac.uk)

Please return to:  
Stephen Kehoe  
Philanthropy & Alumni Relations  
Corporate Communications  
University of Liverpool  
Foundation Building  
765 Brownlow Hill  
Liverpool L69 7ZX

Name:

Address:

Postcode:

Telephone:

Email:

- I have already left a legacy to the University of Liverpool in my will
- I intend to leave a legacy to the University in my will

If you wish to give specific details, please do so here:

Would you be willing to share with us your reasons for making this pledge?

- Please send me further information on leaving a legacy to the University of Liverpool

# A LONG ESTABLISHED HISTORY OF GIVING

The University of Liverpool was built on philanthropy. Over the last 130 years donations large and small have helped to shape our University campus, student experience and world-class research.



## 1881

Liverpool ship owner and merchant William Rathbone raised £80,000 to establish University College, Liverpool, which later became the University of Liverpool.



## 1892

The Victoria Building was constructed following a public appeal to raise funds. Contributions were received from prominent local philanthropists including sugar magnate Sir Henry Tate and Sir William Hartley, founder of the Hartley's jam company.



## 1936

A gift of £100,000 from Harold Cohen made it possible for a new library to be built. Unfortunately, Harold Cohen died suddenly on the day he was due to lay the foundation stone for the library.



## 1998

The University Graduate Association (Hong Kong) established a scholarship programme to support students from Hong Kong and China studying at Liverpool.



## 1984

The Friends of the University of Liverpool was established, bringing together people with an interest in the University to fundraise and support its activities.

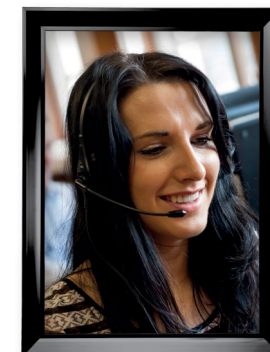


## 2008

The Institute of Irish Studies, the first of its kind in Britain, received a £5 million endowment from the Irish Government to establish the Tony Blair Chair of Irish Studies.

## 2011

The Benefactors' Fund, which supports scholarships and projects that enhance the student experience, reached £1 million through alumni donations.



# MAKE A DIFFERENCE



Inspiring people to learn and achieve, we enable them to make the most of life. And addressing some of the world's toughest challenges, our research is helping to transform lives.

Our University is helping to solve some of the biggest issues facing society. Every day, scientists and academics at the University of Liverpool are achieving things you may never have thought possible. Their discoveries, inventions and achievements could completely transform the way we live, both now and in the future.

We want to maintain our status as a leader in enabling the most talented students to access a world-class education, regardless of background, and to provide outstanding opportunities for their personal and professional development to nurture tomorrow's leaders and thinkers, and to inspire and influence Liverpool's Nobel Laureates of the future.

Every one of our supporters has the power to play a role in our University's future.

**Giving to the University is quick and easy and could help to change lives.**

To make a donation or to find out more about our fundraising priorities, please visit: [www.liverpool.ac.uk/alumni/donate](http://www.liverpool.ac.uk/alumni/donate) email: [giving@liverpool.ac.uk](mailto:giving@liverpool.ac.uk) or call: **+44 (0)151 795 4608**.

Alternatively, use your smartphone to scan the following QR code, which will take you directly to our donation pages.



**Sign up to the University's Give as you Live shopping app and you could raise money for the University every time you shop online at no extra cost to you!**

Thousands of stores have signed up and agreed to donate a percentage of your shopping bill to the University whenever you make a purchase. All you need to do is register, choose the University as your chosen charity, and start shopping! Visit [www.liverpool.ac.uk/giveasyoulive](http://www.liverpool.ac.uk/giveasyoulive) today and see how easy it is to help.

# THANK YOU TO ALL OUR SUPPORTERS

All donors are listed below in alphabetical order starting with those who are in one of the University's Giving Circles. All other donors are grouped alphabetically by graduation year. Anyone who has given continually for the past five years is recognised with an \*.

## THE COURT OF BENEFACTORS

Tung Foundation  
**Legacies**  
**1948**  
Janet B Gnosspelius

## VICE-CHANCELLOR'S CIRCLE

Rosemary Young Persons Charitable Trust  
Wolfson Foundation  
**1988**  
Adrian M Ringrose  
**Legacies**  
Hugh Kelly  
**1940**  
The Estate of the Late Emeritus Professor Miriam Allott  
**1958**  
David R Pearse

## THE GUILD OF PATRONS

3Cs: Crohns and Colitis in Childhood  
Lord Leverhulme's Charitable Trust  
Santander Universities UK  
University of Liverpool Graduate Association (Hong Kong)  
**1960**  
Dr Clive H McLintock  
**1980**  
Huw Jenkins  
**Legacies**  
Dorothy D Catlow  
Muriel J Duckworth  
Marjorie Forrest  
Alan McIlwraith  
Aileen Pennington  
**1954**  
Dr Michael Pugh  
Thomas and Julia Carter Preston

## WATERHOUSE CIRCLE

A H and Mrs B C Whiteley Charitable Trust  
Charles Brotherton Trust  
Give As You Live MBNA  
RedX Pharma  
Professor Michael P Hoey

## VICTORIA CIRCLE

Brian Mercer Charitable Trust  
Kirkby Foundation  
Pat Dyson (in memory of Arnold Dyson)  
**1950**  
Sir Maurice Flanagan KBE CBE  
**1954**  
Eric J Howe CBE  
**1970**  
Jonathan E Rushworth  
**1990**  
Steve Kelbrick  
**Legacies**  
Dr Dmitry Samsonov  
Patrick H Williams  
**1992**  
Dr James M Bennet

## RATHBONE CIRCLE

Barbara Ruddlesden in memory of Dr Sheila Nancy Buckley née Ruddlesden  
The family of Irene Rowlands in her memory

**1965**  
Paul Brett  
**1967**  
Ronald S Austin  
**Legacies**  
Marion H Williams

In memory of John David Lunn – Physics 1966  
Sarah and Finlay Murray  
The Russell Family  
**1944**  
Norman Partyn  
**1946**  
Priscilla M Cottrell  
**1951**  
Harry Myers MEng MIEE  
**1952**  
Kenneth A Lloyd \*  
**1957**  
His Honour David Gee  
Florence Ross \*  
**1959**  
Paul C Todd \*  
**1962**  
Dr Peter M Lee  
**1964**  
Dr June B Cooper \*  
**1965**  
Dr Diana M Walford \*  
**1968**  
Graham J Miller  
Jeffrey A Orr  
**1974**  
Robin Miller \*  
**1978**  
Nigel Taylor  
**1981**  
Dr John D O'Donnell \*  
**1982**  
Edward I Green  
**1983**  
Dr Olwen E Williams OBE  
**1986**  
Michael R Cresswell  
**1992**  
Dr Man S Wong  
**1993**  
Dr John H Coakley  
**1996**  
Dr Anthony M Mould

**1998**  
Carl Edwards on behalf of Park View Project  
Dr Jude C Mahadanarachchi  
**Legacies**  
James Halsall  
Wendy E Stewart-Sandeman  
**1932**  
Colonel Graeme Bryson OBE

## 1,000 FOR £1,000

John D Armstrong  
Karen Brady  
Professor Steve Holloway  
**1948**  
Anthony T Dowd  
Dr Eric J Robbins  
Paul C Todd \*  
**1962**  
Dr Peter M Lee  
**1964**  
Dr June B Cooper \*  
**1965**  
Dr Diana M Walford \*  
**1968**  
Graham J Miller  
Jeffrey A Orr  
**1974**  
Robin Miller \*  
**1978**  
Nigel Taylor  
**1981**  
Dr John D O'Donnell \*  
**1982**  
Edward I Green  
**1983**  
Dr Olwen E Williams OBE  
**1986**  
Michael R Cresswell  
**1992**  
Dr Man S Wong  
**1993**  
Dr John H Coakley  
**1996**  
Dr Anthony M Mould

**1998**  
Carl Edwards on behalf of Park View Project  
Dr Jude C Mahadanarachchi  
**Legacies**  
James Halsall  
Wendy E Stewart-Sandeman  
**1932**  
Colonel Graeme Bryson OBE  
**1,000 FOR £1,000**  
John D Armstrong  
Karen Brady  
Professor Steve Holloway  
**1948**  
Anthony T Dowd  
Dr Eric J Robbins  
Paul C Todd \*  
**1962**  
Dr Peter M Lee  
**1964**  
Dr June B Cooper \*  
**1965**  
Dr Diana M Walford \*  
**1968**  
Graham J Miller  
Jeffrey A Orr  
**1974**  
Robin Miller \*  
**1978**  
Nigel Taylor  
**1981**  
Dr John D O'Donnell \*  
**1982**  
Edward I Green  
**1983**  
Dr Olwen E Williams OBE  
**1986**  
Michael R Cresswell  
**1992**  
Dr Man S Wong  
**1993**  
Dr John H Coakley  
**1996**  
Dr Anthony M Mould

**1998**  
Dr Liam G Herringshaw  
**1999**  
Matthew R Burns  
Robert L Russell  
Emeritus Professor John N Tarn OBE DL \*  
**2003**  
Philip Barton  
**2006**  
David Winstanley  
**2009**  
Ruth Schofield

## HARTLEY CIRCLE

University of Liverpool Women's Club  
Alan J Barnard  
Lady Christine M Bibby  
The Honorable Truman Bodden OBE LLB  
David Brown  
Liz Brown  
Lindsay Burgess \*  
Carol J Carley  
Dr Philip Gould  
Professor Alan Harding  
Janice Holmes  
Emeritus Professor John K Hulme OBE \*  
Robert Jones  
Sandra Leigh-Clark  
Joan MacKinnon  
Marion Mooney  
Graeme W Norval  
Emeritus Professor Michael C Orme  
Geoffrey Ommrod  
Lisa Parks  
Ian Partridge \*  
Caroline Peacock  
Tina Powell  
V L Ranson \*  
Coralie Reynolds  
Sarah Sharp  
Professor Soraya P

Shirazi-Beechey  
Barbara Swannell  
John D Taylor \*  
Brian Upton \*  
Ann Wilson  
**1933**  
Leta Jones \*  
**1937**  
Denis B Harrison JP  
**1938**  
William A Iland \*  
**1941**  
Dr Michael W Hutchings \*  
Alfred H Pinnington \*  
**1942**  
Sir John Charnley CB \*  
Dr Arthur S Davidson \*  
Frank W Myerscough \*  
**1943**  
Professor Frank D Gunstone FRSE FRSC  
Major John D Parkinson FRCVS  
Dr Ian B Terrett \*  
**1944**  
Philip N Bird  
Mrs M Jean Fear  
Eur Ing Desmond J Kealey \*  
Dr John W Porteous FRSE \*  
Roy V Southern  
**1945**  
Dr James H Carmichael \*  
Enid B Godwin \*  
**1946**  
K O Atherton  
Jean F Longley \*  
John H Ockey  
Barbara Peden  
**1947**  
Gerald R Beech \*  
Dr Mary E Cawley  
Joyce M Kovachich  
Eileen Marsh  
Peter F Morton \*

## Thank you for all your support

Dr Elizabeth Rhind \*  
**1948**  
 Dr June P Arnold  
 Eileen M Battersby \*  
 Margaret A Beeching  
 Reverend William N Leak  
 Jean Lee  
 Avril Lucas \*  
 Dr Alec Mackinnon \*  
 Charles A Mann \*  
 David H Morten MRCVS  
 Emeritus Professor James A Proudlove  
**1949**  
 Eric M Bottomley  
 Dr Tom B Rhodes  
**1950**  
 Dr Hilary G Blank  
 Dr David H Carr  
 Sidney J Geoghegan \*  
 Dr Peter R Orman \*  
 Dr Norman G Price  
 Dr John H Vernon CBE \*  
 Iris M Wowles \*  
 Margaret Wilford  
**1951**  
 Donald Cross \*  
 Lucy Durbin  
 Joyce M Dyce  
 Anthony C Fairhead MRCVS  
 John C Gosling \*  
 Patricia M Grenfell  
 Desmond E Gunner MRCVS MBE  
 Arthur Hanley  
 Dr R Heyworth  
 Maureen Jones \*  
 Clifford M Moore \*  
 David F Mowle  
 Josephine Nickson  
 T R Prichard  
 Kenneth Rowe  
 Michael A Sheppard  
 Professor David M Taylor (BSc 1951, DSc 1972) & Mrs Mary P Taylor (née Williamson) (BSc 1948)  
 Sheila M Taylor \*  
 Helga J Young  
**1952**  
 Peter G Beech \*  
 Alexander N Burd  
 Dr Edward D Fletcher  
 Diana J Freeman

Colin Hargreaves  
 Geoffrey H Lewis  
 John Miller \*  
 Harry Padgett  
 Dr Alan Platt \*  
 James Quayle  
 Joseph Shenton  
 Winifred M Thomasson  
**1953**  
 Philip Brown  
 Dr Margaret Burrows \*  
 Dr Norman F Cunningham  
 Dr Malcolm H Dean \*  
 Dr Oskar Dover  
 Dr Marjorie J Duckworth  
 John T Forster \*  
 Roy Horsford \*  
 Stephen R Targett  
 Gerald E Taylor  
 Abdallah A Wakeem MRCVS  
 His Honour Donald B Williams  
**1954**  
 Dr John W Anderson  
 John M Carter \*  
 John B Chase  
 Frank G Crawley  
 Dr Philip A Harrison \*  
 Stanley Hinds  
 Harry Holmes MRCVS  
 Fay M Kidd  
 John E Kneen MRCVS  
 Dr John B Laine \*  
 Professor Alan J Leadbetter CBE  
 Mr L Longworth \*  
 Diarmid A Murphy  
 Dr Peter Searby  
 Keith Wakeley  
 Alan I Wright MRCVS  
 Bernard B Wright  
**1955**  
 David L Harris  
 Dr Dewi Jones \*  
 Eric G Jones \*  
 Professor James Keaton MBE \*  
 John B Kershaw \*  
 John E Lewis  
 Edward G Murphy \*  
 Jean M Nelson  
 Graham M Oates  
 Robert W Parker  
 Olive T Pasco  
 Ann Renshall

Peter Simmons  
 Mr John F & Mrs Patricia S Smith  
 David Spiers  
 Christopher Stell  
 Dr Patrick Wallace \*  
 Alan S Wallis MRCVS \*  
 Diana Whittingham  
 Stewart M Wilson  
**1956**  
 June P Cairns  
 Dr A Anthony Gilbertson  
 Leslie Green  
 Dr Edmund Haws  
 Dr Gareth Hughes \*  
 Dr Alexander Kennedy \*  
 Evan A Kneale  
 Dr Shirley A Leslie \*  
 Dr Sheila M Marsham  
 Alan V Newton  
 Dr George W Pennington \*  
 Ronald A Philipps \*  
 Bernard Pomfret  
 M J Shillaker  
 Dr Margaret A Sutton  
 Dr David Sykes  
 Stuart N Watson MRCVS  
 Dr Norton E Williams \*  
 Dr Ruth M Wray  
 Dr Jean M Wright  
**1957**  
 Dr Roy A Ashcroft MRCVS  
 Donald J Ashton \*  
 Rosemary Burgess (Hart) \*  
 Clifford L Butler MRCVS  
 Andrew C Bygrave MRCVS  
 Dr John Cartidge  
 Dr Patricia B Corkery  
 Dr Robert Dittman  
 Jim M Dye  
 Dr Kenneth F Edwardson \*  
 David R Evans \*  
 Richard G John \*  
 Alan W Jones  
 Keith M Jones  
 Dr June S Macdonald  
 Bernard Marsden \*  
 Dr Len Mervyn  
 Dr Dewi W Owen \*  
 George E Schoon \*  
 Anthony K Stevens \*

Dr James H Stewart  
 John M Taggart  
 John Tandy MRCVS \*  
 Dr Neville R Thompson \*  
**1958**  
 Jane Biran née Dillon  
 Neil M Bryan MRCVS \*  
 John Duckett  
 His Honour George A Ensor  
 Dr Maureen D Forbes  
 Alan J Hargreaves  
 William N Kellett  
 Jennifer A Long  
 Jean M Lund  
 Dr Anne Martindale  
 Vernon New  
 Brian Pyle \*  
 Betty Rathbone  
 Dr Philip H Stevens \*  
 William J Taylor \*  
 Geoffrey E Walker \*  
 Margery M Wharton \*  
 Trevor Williams \*  
**1959**  
 David R Bourne  
 Professor Peter W Brunt OBE  
 Professor Robin A Butlin  
 Moira Cowpe  
 Hilda Haws  
 Sylvia Herbert née Bennett \*  
 Dr J Higgin \*  
 Margaret Jenkins  
 Mrs J M Jenkinson  
 Anita J Lee-Young  
 Terence C Longworth  
 Arthur T Morgan  
 Roger E Morgan  
 Elizabeth Shorrock (née Fotheringham)  
 Anthony L Silson \*  
 Mary E Silva \*  
 Eric G Jones \*  
 Peter Stringer  
 Dr Elizabeth M Summers \*  
 Professor Julian L Verbov JP MD  
 Ian A Watson  
 Dr John D Williamson \*  
**1960**  
 Joseph W Bazeley \*  
 Dr Harold J Bradley \*  
 Alison M Gentles

Dr Frances A Hardy \*  
 Vincent W Hatton \*  
 Dr Leslie A Mitchell  
 Arthur Pye  
 Robert G Stead \*  
 Martin W Stubbs  
 Kevin C Taylor MRCVS CBE  
 Malcolm P Thomas  
 Dr Vivienne S Turner  
 Gerald R Wilde \*  
**1961**  
 Keith R Baker  
 Dr Leo J Carroll \*  
 Dr Pamela M Connolly  
 Michael C Davey  
 Ian A Edwards \*  
 Dr Thomas M Farley \*  
 Margarita I Forber  
 Alan H Howard  
 Dr John M Kingston  
 Dr Joan C Pawson  
 Reverend Canon David Peacock \*  
 David R Procter  
 Brian Prudham  
 Dr Allan V Pullin  
 Margaret Rivett \*  
 Anthony Thomas  
 Dr David M Turner  
 Gareth V Williams MRCVS \*  
 George D Windsor  
 A D Wright  
**1962**  
 Geoffrey M Austin \*  
 Dr Philip A Bird \*  
 Eric J Brindley  
 Elaine Coupe (née Kelly)  
 Peter A Daniel  
 Andras K Fabry MRCVS  
 Rex Hale  
 Michael K Jackson  
 Ruth Jacobs  
 Harry Locksley  
 Dr Leslie G Proll  
 Dr Alan A Quayle  
 Ernest F Savage  
 Dr Michael J West \*  
 Dr A Zsigmond  
**1963**  
 Geoffrey Allen  
 Alfred L Batchelor MRCVS \*  
 Sheila A Bee \*  
 John P Butterworth

Patricia Ann Dawson (née Bellerby) \*  
 David J Dixon \*  
 George M Du Sautoy  
 Professor Neil Edington MRCVS  
 Jennifer Frew  
 Linda J Hughes  
 Dr John Hurdley \*  
 Dr Eileen S Merchant  
 Penelope A Messenger \*  
 Dr Beverley A Moore  
 John Prytherick  
 Sandra Ann Grahame Settle  
 Raymond J Spreadbury \*  
 Norman C Tate  
 Tack K Tsui  
 James W Wardhaugh  
 Mary Wylie  
**1964**  
 Raymond J Allan  
 A H Barker  
 Dr Robert G Bryans  
 Ian Craig  
 Brian H Eaton \*  
 Anthony Edginton MRCVS  
 David P Eva  
 Dr James S Forster  
 Anthony B Latham \*  
 Morris Loveland  
 Dr Carol Morrow  
 Geoffrey Moss \*  
 Dr Graham L Mytton  
 Christine J Nuth  
 Paul A Tranter FCA \*  
 A H Watson  
 Allen White  
 Alan Winstanley \*  
**1965**  
 Anthony J Barnes MRCVS  
 Peter J Regan  
 Michael Bickley  
 John S Bower MRCVS MBE \*  
 James C Budden  
 Dr James F Clarke  
 Frederick G Cook  
 Dr Margaret E Davies  
 Philip A Dyer  
 Dr Malcolm W Gartside  
 Dr Christine E Heading  
 Anthony W Hewitt \*  
 J Douglas Home \*  
 Bernard I Jones  
 Dr David R Julian \*

Professor Ian Kershaw \*  
 Dr Sarah Knott  
 Keith A Marsden \*  
 Adrian L Middleton MRCVS  
 Emeritus Professor John G Mitchell  
 Frank Mizen  
 Linden S Osborn  
 Elizabeth A Taylor  
**1966**  
 Dr Robin M Barr-Hamilton  
 Professor John Beacham CBE FRSC \*  
 Timothy R Bevin MRCVS \*  
 Kenneth H Brown  
 Elizabeth A Cragg  
 Dr Alan Cummings  
 Elizabeth R Earl  
 Robert M Eyre  
 Bob Fielding  
 John Furneaux  
 Alfred J Gidney  
 Stephen E Green \*  
 Evelyn I Gutteridge  
 Dr Liz Hare  
 Michael A Jones  
 Dr Haruo Konishi  
 Professor Peter J Lea \*  
 David H Mawdsley  
 Dr John P McKay  
 Lester W Medcalf  
 Paul Morgan  
 Dr Patricia M O'Brien  
 Grahame Poulton \*  
 William J Ralph  
 Professor Ivor L Roberts  
 Dyana Rodriguez  
 Arthur G Sealby  
 Bernard J Swift MRCVS \*  
 Peter N Whitaker \*  
 Keith J Wigley  
 Dr Denis C Wilkins  
 Dr Donald N Wilkinson  
 Canon Michael Wilson \*  
**1967**  
 Dr Robert W Allen  
 Brian J Carter  
 Charles J Doyle  
 Dr John K Gibbins  
 David W Goodier \*  
 Professor David Hughes  
 Dr Winifred J

McClelland  
 Ronald B Osborn  
 Thomas A Roberts \*  
 Michael K Ross  
 James M Scudamore \*  
 Colin Suckling BSc 1967 PhD 1970 DSc 1989 & Catherine Suckling (née Faulkner) BA 1970  
 Dr Arthur Thomas  
 David M Thomson \*  
 Susan G Town  
 Dr Terence J Walton \*  
**1968**  
 Margaret S Aldridge  
 Rosemary I Aveyard  
 Dr Susan Hotson  
 Timothy Bowler \*  
 Dr Christine A Brace \*  
 Dr Brian Davis  
 Dr Heather M Davis \*  
 Alan Eames-Jones  
 The Faux Family  
 Brian & Joyce Forhead  
 Nigel Griffiths  
 Lynda Haddock \*  
 Derek M Haselden \*  
 Elspeth D Julian  
 Brendan Markland  
 Martin J Mellodey  
 Steven Mitchell \*  
 Anne B Parry  
 Dr Colin K Pearson  
 David L Port  
 Dr John B Ridyard \*  
 Dr David E Robertson  
 Dr Paul D Roy  
 Helen R Slack  
 Anthony E Smith \*  
 Stephen M Tobin  
 John D Tyson  
 Julia J Westwell  
 David A Whyman  
 David Wilkinson  
 James H Wood, in memory of my parents  
**1969**  
 Richard Baldwin  
 Kathleen M Botham  
 David T Burke CBE  
 Stuart Cranidge  
 Dr Wyndham M Edmunds  
 Dr Michael D Freestone  
 Peter Furness  
 Dr Jeff Green  
 Beryl M Jackson

Emeritus Professor Paul H Leng  
 Professor J J McCutcheon CBE  
 Elias K Ocran \*  
 Major Ian L Riley TD FSA Scot \*  
 Sarah J Wadham  
 Charles A Walsh  
 Drs Ken & Carolyn Yong-Hing  
**1970**  
 Margaret R Ankers \*  
 Christine A Billinge  
 Dr Peter Dolan \*  
 Gillian Enstone \*  
 Dr John Z Heckmatt  
 Ian L Mathewson \*  
 Andrew J Palmer  
 Robert C Parkinson  
 Dr Jean Quinn \*  
 Dr Douglas Seaton MS FRCP \*  
 Michael Smith  
 Dr David J Walker \*  
 Malcolm Webb  
 Mr P Woodrup  
 Melvyn S Yates  
**1971**  
 Dr Dexter L Ator  
 Professor Peter W Batey \*  
 Hazel M Bentall MRCVS \*  
 Roger T Briggs  
 Moira Chapman  
 David A Clare MRCVS  
 Patricia S Dodd  
 Dr Joyce Ferguson  
 Stephen J Grady  
 Marcia L Headon  
 Lester B Hicks CBE \*  
 John T Ireland  
 Clinton C Jefferies MRCVS  
 Stephen J Morris  
 Dr Janet C Roberts \*  
 Julie M Sewell  
 Alan J Snowden  
 Professor Gordon R Webster  
 Anita Weeks  
 Kevine R Williams  
**1972**  
 Jennifer C Boothman  
 David C Coard  
 Alma V Cullen  
 Thomas C Daley  
 Dr Derek Eastwood

David R Hardy  
 Dr Alan L Hisscott  
 Wayne M Jones \*  
 John Keever  
 Gillian M Knight  
 Nora P Lehane \*  
 Dr D G & Dr P L Machin \*  
 John Murphy  
 Janet A Pollard \*  
 Dr Heather G Prince  
 Ann A Rodgers \*  
 Edward R Shaw \*  
 Andrew J Simpson \*  
 Raymond H Symons  
 Dr Frank G Taylor MRCVS  
**1973**  
 John P Baird  
 Richard M Bend \*  
 Kathleen Bland  
 William R Davis \*  
 Mark M Dooley  
 Timothy Edwards \*  
 Christopher D Friel  
 Dr Les Garner  
 Christopher S Graham \*  
 William J Handrahan  
 Nicholas Hebson  
 John H Howe  
 Stephen N Keightley  
 Dr Tony L Lawrence MRCVS \*  
 Glyn O Roberts  
 Phil & Liz Royle \*  
 Michael C Williams \*  
**1974**  
 Dr Jonathan B Bache \*  
 David H Bishop  
 Lilian Black \*  
 Margaret M Brooks \*  
 Dr Alan Cane \*  
 Dr Anne E Caunt  
 Dr Tina A Dixon  
 Robert W Emsley  
 Neil C Gibbs  
 Allen R Hudson  
 Allan C Jones \*  
 Stephen G Jones  
 Dr Teng T Khoo  
 Peter J Laws  
 Christopher Limb  
 Harry L Malley  
 Carol A Sach  
 Christina M Sargant \*  
 Dr Michael J Sasse  
 Dr Ian G Scott  
 Dr Bhubinder Singh

John C Smith  
 Martin R Winstone  
**1975**  
 Stephen J Alcock  
 Judy R Allen \*  
 Dr S Michael Crawford  
 Graham P David MRCVS \*  
 Janet E Edwards \*  
 Pauline J Fowler  
 Richard J Frankland \*  
 Anne C Gregory  
 Ann Griffiths \*  
 Margaret H Henley JP  
 Dr Christine E Jones \*  
 Anthony J Lloyd \*  
 Dr Vanessa J Martlew \*  
 Dr K Robin McLean  
 Andrew H Morris  
 Dr Anne M Morrison  
 Professor Rev Dr D Ben Rees  
 Andrew Robinson MRCVS \*  
 Daphne Rumball  
 Colin Sansom  
 Gary Shephard  
 Martin P Wakefield  
 Dr Stephen A Wharton  
 Dr Nigel C Williams \*  
**1976**  
 John Allcock \*  
 Christine Beddoes  
 Jacqueline Birnie  
 Phil & Frances G Boa \*  
 Michael J Burchnall MBE  
 Philip Butler  
 Graham Cole  
 Dr Robert Dawson  
 Dr Hilary Dodd \*  
 Michael Domin \*  
 Dr Ellen M Gregson  
 Dr Madeleine C Hardman \*  
 Professor Stephen J Hawkins  
 Brian A Hildick-Smith MRCVS  
 Dr Elizabeth C Howard \*  
 Albert E Jeory  
 Stephen J Kirby  
 Guy Mewha-Williams MRCVS \*  
 Mrs Celia Moule  
 Dr Patricia A Mumford \*  
 Brigid M Parkin  
 John Walsham

Dr Paul D Wilkes  
 Robert C Workman  
**1977**  
 Stuart Brown  
 Jacqueline M Fisk  
 Michael G Harrison  
 Jonathan P Hattersley \*  
 Dr Paul B Hayward  
 Anthony D Herrington \*  
 Paul J Howard  
 David K McFarland  
 Isobel E Newton  
 Dr Andrew F Rodgett  
 Dr Timothy G Rowan MRCVS \*  
 Susan E Rowland  
 Dr Rowena J Sankey \*  
 Noel Walker  
 Dr Naomi J Ward \*  
**1978**  
 Dr Erica Allason-Jones  
 Dr Thomas G Cole  
 David A Cook \*  
 Madeleine S Forsyth MRCVS \*  
 Rupert N Hartley \*  
 Dr Colin S Hopkins \*  
 Anne P Jaikaran  
 Christopher Lloyd MRCVS  
 Dr Carol R Parsons \*  
 Alison C Pedley \*  
 Dr Colin Powlesland  
 Reverend Margaret G Quayle  
 John D Regan \*  
 Professor & Mrs D W Sheel  
 Linda Shuttleworth  
 Dr Peter R Sill  
 David S Smith  
 Reverend Simon M Starkey \*  
 Jennifer A Taylor  
 Dr Janette E Walsh  
 John M Webster MRCVS \*  
**1979**  
 Geoffrey M Baines MRCVS  
 Margaret E Boaden  
 Antony P Collins MRCVS \*  
 Elaine M Crofts  
 Dr Andrew Gillam  
 Dr Catherine S Graham \*  
 Stephanie M Hudson \*  
 Glenn C Hurstfield  
 Andrew H Jones

## Thank you for all your support

Diana M Lewis  
Dr Gillian Malin  
Steve McCormack  
John P Millington  
Helen C Mrowicki \*  
Clive E Shepherd  
MRCVS \*  
Stephen T Smith  
MRCVS \*  
John Tedford  
**1980**  
Belinda J Boyes  
Peter M Cawson \*  
Mark C Collins \*  
Nicola A De Quincey  
Joseph B Dolan \*  
John Doyle \*  
Michael W Eccles  
Eileen T Haggis  
John Haimes  
Lucilla C Herrmann  
Gillian Hill  
Dr Jonathan S  
Matson \*  
Dr George A Orr  
Mrs Julie Procter  
Mark Procter  
Sara G Szolcek  
**1981**  
Alistair M Buckley  
Anthony Carter  
Elizabeth M Clapham  
Anne M Connell  
Deepankar Dutta  
Nicholas Evans \*  
Neil K Hibbert  
Graham R Hines  
MRCVS \*  
Dr Christine A Lesley  
Dr Lesley P Longman  
Giuseppe Mastrangelo  
Shelley Moxham  
Steven B Rimmer  
Kim E Skirrow  
Anthony J Smith  
Michael Smith  
**1982**  
David G Bentley  
MRCVS  
Alistair R Dixon  
Penelope A Green \*  
Michael J Hegarty \*  
Mrs Susan Hill  
Dr Denyse Kershaw \*  
Avinash Mehta  
Jonathan C Power  
MRCVS \*  
Dr Deborah Radcliffe  
Frances S Ratcliffe \*

Julian R Slater MRCVS  
John H Wilbraham  
**1983**  
John W Barber \*  
Francis Boyce \*  
Moira D Callaghan  
Philip T Davies  
MRCVS  
Timothy D Davies  
MRCVS \*  
Ian W Halliday  
Julian A Hudson \*  
Kay E Johnston  
Dr Andrew M Keeley  
Ruth J McElroy  
MRCVS  
Bryan McVey  
MRCVS \*  
Stephen Molloy  
Peter Moss  
Rosemary A Mould  
MRCVS \*  
Ann M Murphy  
Dr Andrew M Pilling  
MRCVS  
Dr Peter S Richards  
Dr Jane E Wright \*  
**1984**  
Stephen Affleck-  
Drimer  
Dr Douglas Anglesea  
Derry N Bertenshaw \*  
Iain C Buchan  
Peter J Clements  
Alastair Curnock  
Penelope A Evans  
MRCVS \*  
Nicholas J Fell  
Danielle E Freestone \*  
Jim M Hague  
Anne F Harper  
Michael G Harris \*  
Peter W Kung  
Stephen J Matthew  
MRCVS \*  
In memory of Liam R  
Morrisroe \*  
Andrew J Pink \*  
Professor Paul K Tam  
Clare S Turner \*  
Richard J Tyler  
MRCVS \*  
**1985**  
Elizabeth A Adams  
MRCVS  
Dr John M Buckley  
Leigh Chambers  
Frances Coldstream \*  
P A Dodman  
Anna K Fox

Dr Kenjiro Hayashi  
Karen A Heddon  
John R Jones \*  
Dr John A O'Malley \*  
Hady G O'Neile  
MRCVS \*  
Liz Ryan  
Michael P Simmons \*  
Sheila V Smears \*  
Dr Audrey Smith  
Dr David Stokoe \*  
Robert D Taylor  
**1986**  
Edward C Bennett  
Katrina K Campbell  
Dr & Mrs C Fear \*  
Gillian M Goddard  
Dr David O Goldberg  
Camille F Habboo  
C T Knowles \*  
Dr Stephen A Murphy  
Dr Bernard Norton MD  
MRCP  
Sarah A Rogers  
P Walker BDS  
**1987**  
Dr Caroline M  
Benjamin  
Dr Jonathan D  
Davies \*  
Dr Barbara A Griffith  
Paul A Grossman  
Lee C Jones \*  
Anthony J Lloyd-Perks  
Joanna M Love  
Christopher J  
McWilliam  
Caroline A Moss  
MRCVS \*  
Andrew J Mulliner  
Christopher Page \*  
Pauline G Richards  
MRCVS  
Roger Ring  
Karin Thompson  
Catherine J Wilson  
**1988**  
Dr Helen J Dewhurst \*  
Michael J Halliday \*  
Dr Sukhdev S Mann  
Athol W Marshall \*  
Robert A Schofield  
MRCVS \*  
Lesley A Smith  
Dr David H Wickstead  
**1989**  
Dr Mohammed S  
Allah Hoo  
Dr Alison J Allen  
David T Cook \*

John C Goble \*  
Demetrios C  
Hadji Georgiou  
John R Hodgson  
Dr R B Jones  
Prit K Nijjar  
Catherine J Pearson  
Katherine J Penfold \*  
Dr Philip T Rose \*  
Dr David H Sandiford  
Dr Devanitha  
Sekarajasekaran  
Dr Suparna  
Sukumaran  
MRCPsych \*  
**1990**  
Gillian Bainbridge  
Gerard F Burke  
Anthony J Chadwick  
MRCVS  
Nicholas I Colman  
Rebecca V Killoran \*  
Dr Karen D Marlow \*  
Philippa E Noon \*  
Christine A Oates \*  
Anant Patel  
Helen C Plummer  
Dr Timothy P Regan \*  
Alyson J Richardson  
MRCVS \*  
Kate and Nic  
Robertson  
Felicity Shepley  
Paul M Snowdon  
Sarah E Westwood  
**1991**  
Dr Yolande M Agble \*  
Kerry D Bateman \*  
Elizabeth M Bott MBE  
John C Bray  
Maria P Cass  
Mark J Chamberlain  
Dr Ann E Connor  
Dr Marc Edwards  
Julie L Gething \*  
Alastair J Gillespie \*  
Sarah F Heppenstall  
MRCVS \*  
Melanie K Hodson  
Chad A Northcott  
MRCVS \*  
Claire S Parker  
Dr Kathryn Porter \*  
Margaret and Elizabeth  
Thompson \*  
**1992**  
Dr Anthony J Antao  
Alison J Baillie \*  
Jonathan T Bradley \*  
Dr Daniel J  
Clutterbuck \*

Robin Daw  
Katie Francis  
Emma U Gilheany \*  
Dr Justine Hadcroft \*  
John E Hollier  
Tanya G Iguchi  
Elizabeth A  
McLoughlin \*  
Thomas E Palfreyman \*  
Harry J Russell \*  
Dr Edward P Silva \*  
Sally M Wamock \*  
**1993**  
Fiona Cameron  
Elaine P Cassidy  
Dr Jennifer S Harris  
Dr Catherine A  
Hobbs \*  
Sarah Jones-Morris  
Dr Elizabeth J  
McMillan  
Wesley Moody  
Harriet J Patel  
Elizabeth A Penn  
Derek J Pettet \*  
Jacqueline K Priestley  
MRCVS \*  
Ann G Rees  
Jim S Reynolds \*  
Peter S Rowley  
Mark F Sherlock \*  
Jain M Smets \*  
Judith C Winters \*  
**1994**  
Dominic J Anderton  
MRCVS  
Dr Irene Brightmer  
Bethan J Buckley  
David J Byrne  
Dr Robert J Chinneck \*  
Stavroula G Daoussi  
Elizabeth A Davies  
Julian A Davis  
Dr Nicola J Dawson \*  
Samuel J Demuth \*  
Mark Gillespie  
John C Miller  
Alexandre Oleinikov  
**1995**  
Gordon Aindow  
Dr David N Anderson  
Gregory P Ashe  
Dr Charlotte Benson  
Dr Tajinder S Bhandal  
Helen L Charlton \*  
Dr Jamie Coady  
Thomas Davies \*  
Sarah L Dunbar \*  
Christina M Ellaby \*

David F Friel \*  
Katharine I Higgins  
Margaret Hopkins  
Clare E Murnaghan  
Dr Barbara J Murray \*  
Matthew J Perry  
Peter R Rice  
Clare L Ringland  
Harry Rooney \*  
John G Selby \*  
Matthew R Sinclair  
David W Stern \*  
Dr Benjamin Williams  
**1996**  
Clive R Bailey \*  
Professor Alan R  
Battersby  
Catrina J Brazier \*  
Colin Brown FRSA \*  
Paul J Clifford  
Eithne M Dunne  
Ronen I Goodfriend  
Siobhan M Hendrick \*  
Sarah L Huntington  
Andrew E Johnstone  
Dr Michael Katsimihias  
Dr Katherine M  
Mallam \*  
Graham F Parker \*  
Dr Mohammed Shafiq  
Barbara J Strong  
Lewis R Taylor  
Dr Stephen Thompson  
Gillian V Thorpe  
Claire M Tyler  
**1997**  
Laura M Adam  
Adrian A Allan MRCVS  
David P Allen \*  
Dr John R Claxton  
David N Dunbar  
Judith Edwards \*  
Matthew Forrest \*  
Veronica T Howley \*  
Jacqueline Hughes  
Dr Michael J  
Loughran \*  
Victoria Pritchard \*  
Dr Ferozuddin Sayed  
Peter W Skinner \*  
Geoffrey A Turner \*  
Felicity A Ward \*  
Chloe E Willans  
David H Wilmot  
Dennis Wong \*  
Dr Sierk J Yberna  
**1998**  
Dr Nagappan  
Arunachalam \*

Eleanor G Ball  
Andrew A Benham \*  
Andrew Bold  
Lorna Bowers \*  
Charlotte L Gooch \*  
Dr William P Heal  
David C Kirwin \*  
David P Lyons  
Caroline Waters \*  
Gillian C Whitehurst  
MRCVS  
James C Whittam \*  
**1999**  
Rachael Barker \*  
Dr Deborah M Burke  
Richard J Carter \*  
Dom Gabriele and  
Family  
Sonia L Grimshaw \*  
Beng W Hosadinata  
Samantha V Purcell  
MRCVS  
Patricia Silker \*  
Eleanor Simpson  
**2000**  
Dr Alexander E  
Blackmore  
Alex R Cowin \*  
Paul D Holloway \*  
John G Jones  
Mary Maxwell  
Elvina M Pittaway  
MRCVS  
Saranna G Riley \*  
Stuart Sime \*  
**2001**  
Maria L Athayde  
Joanna E Bryce  
Philip A Cornford \*  
Nina Dawson  
Olivia A Halligan  
MRCVS  
Mr Simon Hodgkiss  
Simon G Jin  
Kim McGowan  
Peter J Millichap  
Mrs E K Pearce  
Hirdeep S Sanghera  
Hugh Wood  
**2007**  
Saltuk Aksahin  
Mr Joe Berry  
Olayinka Elegbe  
Baljeet S Kundan  
Daniel L Nemethy  
Dr Talha Patel  
Marie W Szydłowska  
**2008**  
Suzanne M Andrade  
Mark Corak

Alison C Coleman  
Nicola Driscoll \*  
Harold L. Geoghegan  
Stephen Hodges  
Louise E Johnson  
Dr Warren Kent  
Helen C Mansley  
Nicola M Runcie  
Dr Richard A Sturge \*  
**2004**  
Dr Peter C Bamford  
Caroline E Grafyn von  
Westarp MRCVS  
Katharine J Harrison  
Dr Elizabeth V  
Kingston  
Sarah L Massey  
Alexandra A Perkins  
MRCVS  
Stephen W Porteous  
Sheila A Russell  
David & Jenny  
Shepherd  
**2005**  
Andrew Bannatyne  
Clare Bradley  
William Fish  
Guy J Hinnigan  
MRCVS  
Benjamin R Jenkins  
Dr Sarwar S Khan  
Joseph P Mackinder  
MRCVS \*  
Joanne Roberts  
Philip Rose  
Seevali Surendran  
**2006**  
Christopher H Bell  
Dr Lee B Jones  
Oliver Kroener  
Steffen Krug  
Luke J Ouster  
Zuber Patel  
Professor Zhu Qian  
Louise C Routledge  
Rebecca H Sany  
MRCVS  
Hugh Wood  
**2007**  
Charles W Adjei  
Anurag Agarwal  
Andrew T  
Christodoulou  
Dr Kenneth K Lam  
Piringar M Niyang  
Ton H Phung  
Raveenderen  
Ramamoothie  
**2013**  
Colin C Hawsworth

David W Hounsell  
Mark Louis Y Low  
Yelena Mikhaylova-  
O'Connell  
Sarah Moore  
Robert F Nelson MBE  
Olufemi O Okeya  
Randolph E Rochester  
Dr Andrea R Sheel  
Yiqing Yang  
**2009**  
Nicola J Beesley  
MRCVS  
Anita R Cradock  
John S Doherty  
Jolanda L Elmers  
Brian N Kinkead  
Dr Manuel A Salazar-  
Guapuriche  
Kelly E Smith  
Benjamin P Ward  
**2010**  
Dr Stuart D Armstrong  
Rayan F Azab  
Hilary J Bishop  
Leanne Byrom  
Sophie A Determann  
Jennifer C Jackson  
Everette Mackey  
Sophie L Nixon  
Maria Rafiq  
Rajesh Renick  
Thomas M Shanahan  
Daniel Smith  
Kurien Varughese  
Wen-Hsiung Yang  
**2011**  
Akinwale Akerele  
Ricki Allport  
Theophilus Faruna  
Thomas Keating  
Julian P Leary  
Jose Manuel Lopes De  
Carvalho Lucas  
Ricky W Ma  
Sunday J Umoyoh  
Godiya B Yohanna  
**2012**  
Charles W Adjei  
Anurag Agarwal  
Andrew T  
Christodoulou  
Dr Kenneth K Lam  
Piringar M Niyang  
Ton H Phung  
Raveenderen  
Ramamoothie  
**2013**  
Colin C Hawsworth

Lau Y Keat  
**Legacies**  
The Estate of the Late  
Joyce Bazire  
The Estate of the Late  
Beatrice Dale  
**1959**  
Dr Colette Jones  
**UNIVERSITY OF  
LIVERPOOL IN  
AMERICA INC**  
PepsiCo Inc  
**1950**  
Dr Eric S Hill  
**1951**  
Dr Kenneth R Hanson  
**1956**  
Frank W Brownlow  
Dr Peter C Fletcher  
**1957**  
Dr John C Knight  
**1958**  
Dr John T Barber  
**1959**  
Dr John K Campbell  
MD FRCP  
**1960**  
David J Moorhouse  
**1961**  
Dr Brian H Jones  
**1963**  
Dr Peter Soo  
**1964**  
Dr Peter G Smerd  
Dr Michael J Winrow  
**1965**  
Khaled M Shawwaf  
**1966**  
Dr George B Eagleton  
**1967**  
Michael R Hollingdale  
Tony and Ann Pogrel  
**1970**  
Richard J Bevis  
**1974**  
Paul W Howey  
**1975**  
Dr Richard J Hughes  
**1976**  
Graham J Brent  
Dr Keith Sheppard  
**1977**  
Michael M Trupiano  
**1978**  
Dr Frank W Harris

Simon D Matthews  
Dr Peter G Milner  
**1979**  
Dr George F Green  
**1981**  
Isobel M Moore  
Dr Shirley A Russ  
**1982**  
Dr Helen E McKay  
Katz  
Dr Nicholas E  
Sharrock  
**1983**  
Stephen E Jerman  
**1984**  
Wendy Beestlestone  
**1985**  
Dr Simon D  
Waddington  
**1986**  
Robert Houghton  
Jonathan E Tunnicliffe  
**1987**  
Susannah R Dickinson  
Sarah J Wilcox  
**1988**  
Philip L Beckett  
Dr Paul P Carter  
**1989**  
Dr Eng-Long Goh  
**1990**  
Paul R Elstone  
**1994**  
Diana J Duckworth  
Dr Usman Goni  
**1995**  
Gwen C Ouellette  
**1997**  
Alexander N Saunders  
**1998**  
Dr Nigel P Crawford  
**2002**  
Samuel D Clayton  
**2005**  
Enrique J Cortinas  
**2007**  
Jon S Butler  
Earl J Coombs  
Sami Van Vliet  
**2008**  
Jennifer Kunhardt  
**2009**  
Jerome Breguet  
Stephanie J Mar  
**2010**  
Rayan F Azab

Mark Einfeld  
Dr Yuxuan Xiao  
**2011**  
Samuel Agyepong  
Victoria A Johnson  
Dr Paula J Posas  
Susan E Saxton  
**2012**  
Kerry Meyers  
**Plus 398  
anonymous  
donations**





UNIVERSITY OF  
LIVERPOOL

**PHILANTHROPY & ALUMNI RELATIONS  
CORPORATE COMMUNICATIONS**

UNIVERSITY OF LIVERPOOL  
FOUNDATION BUILDING  
BROWNLOW HILL  
LIVERPOOL  
L69 7ZX  
+44 (0)151 795 4608  
[www.liverpool.ac.uk/giving](http://www.liverpool.ac.uk/giving)  
[giving@liverpool.ac.uk](mailto:giving@liverpool.ac.uk)

---

THE UNIVERSITY IS A MEMBER OF THE ELITE  
RUSSELL GROUP OF RESEARCH-LED UNIVERSITIES



PLEASE RECYCLE  
THIS DOCUMENT

PRINTED ON  
RECYCLED PAPER

PRODUCTION: UNIVERSITY CORPORATE COMMUNICATIONS